

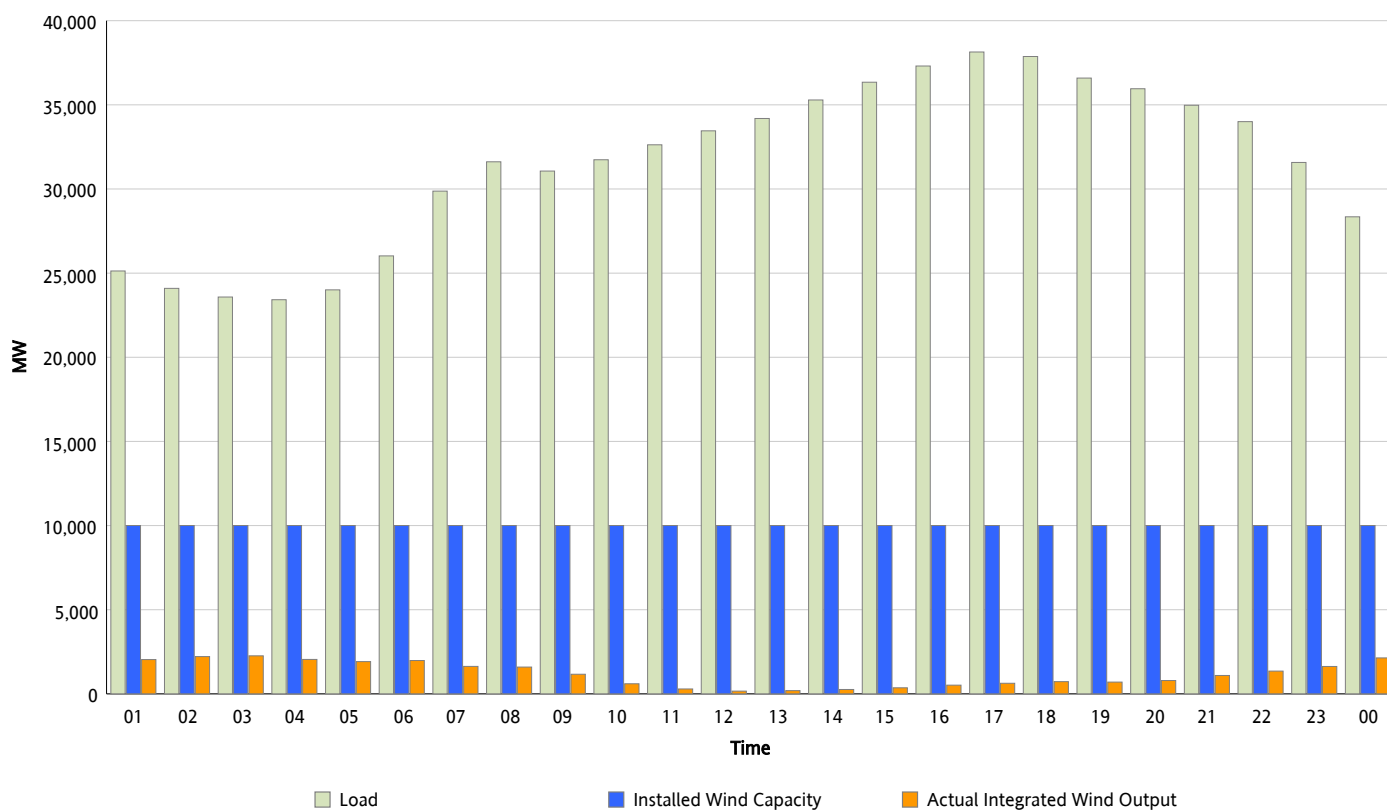


ERCOT Grid Operations

Wind Integration Report : 10/31/2012

Peak Load	38,141 MW
Load Peak Hour (HE)	17
Wind Over Peak	629 MW
Wind Record 06/19/12	8,368 MW
Max Wind Value*	2,345 MW
Wind Peak Time	02:22
Wind Integration %	9.91 %

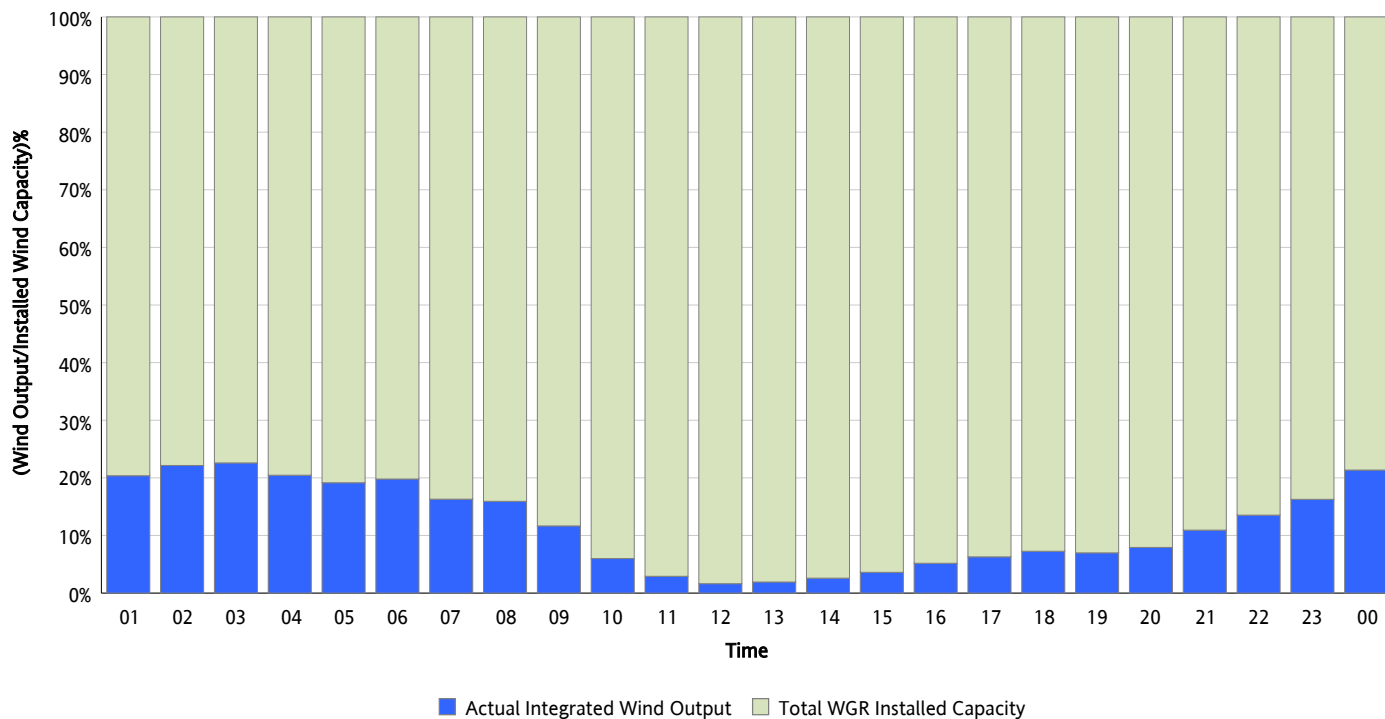
Hourly Average Actual Load vs. Actual Wind Output
10/31/2012



* Wind Record and Wind Max represent instantaneous values and the rest of the values are integrated over the hour

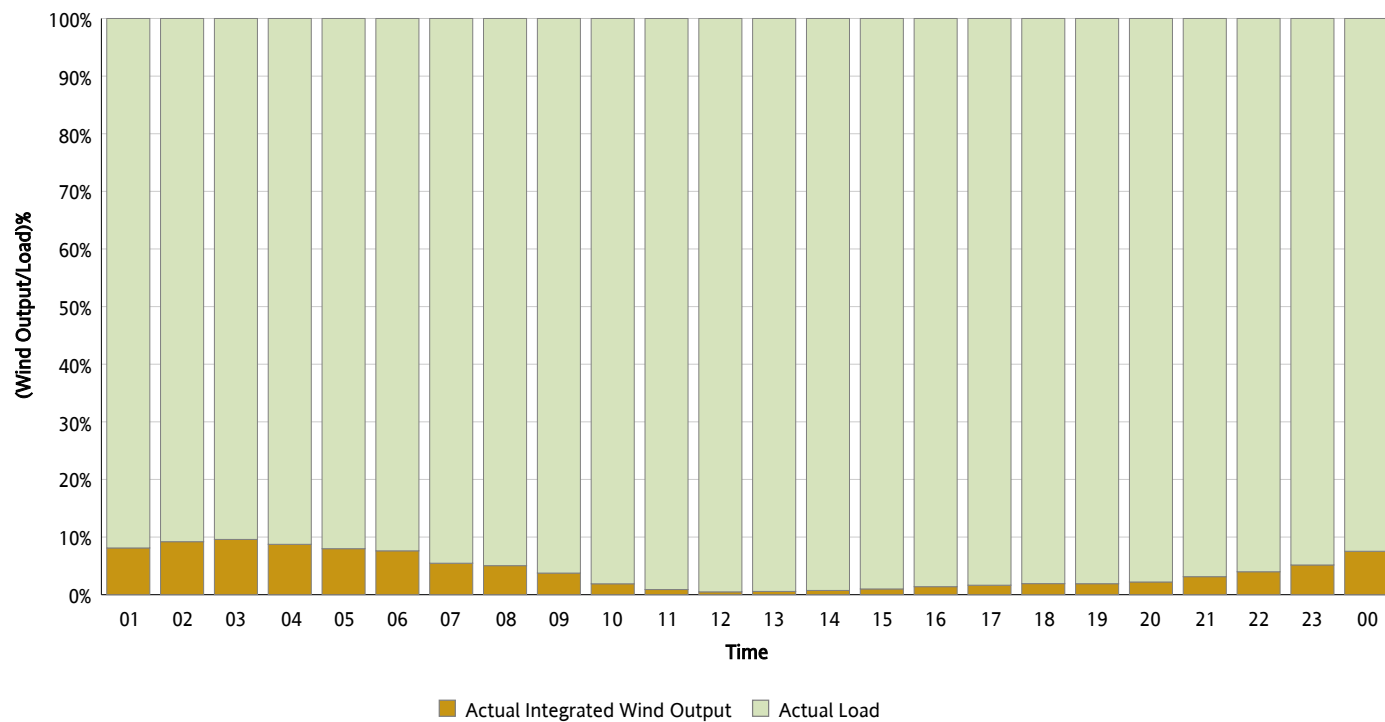
Actual Wind Output as a Percentage of the Total Installed Wind Capacity

10/31/2012



Actual Wind Output as a Percentage of the ERCOT Load

10/31/2012



ERCOT Load vs. Actual Wind Output

10/24/2012 - 10/31/2012

